

# High quality assessment data as a substrate for research:

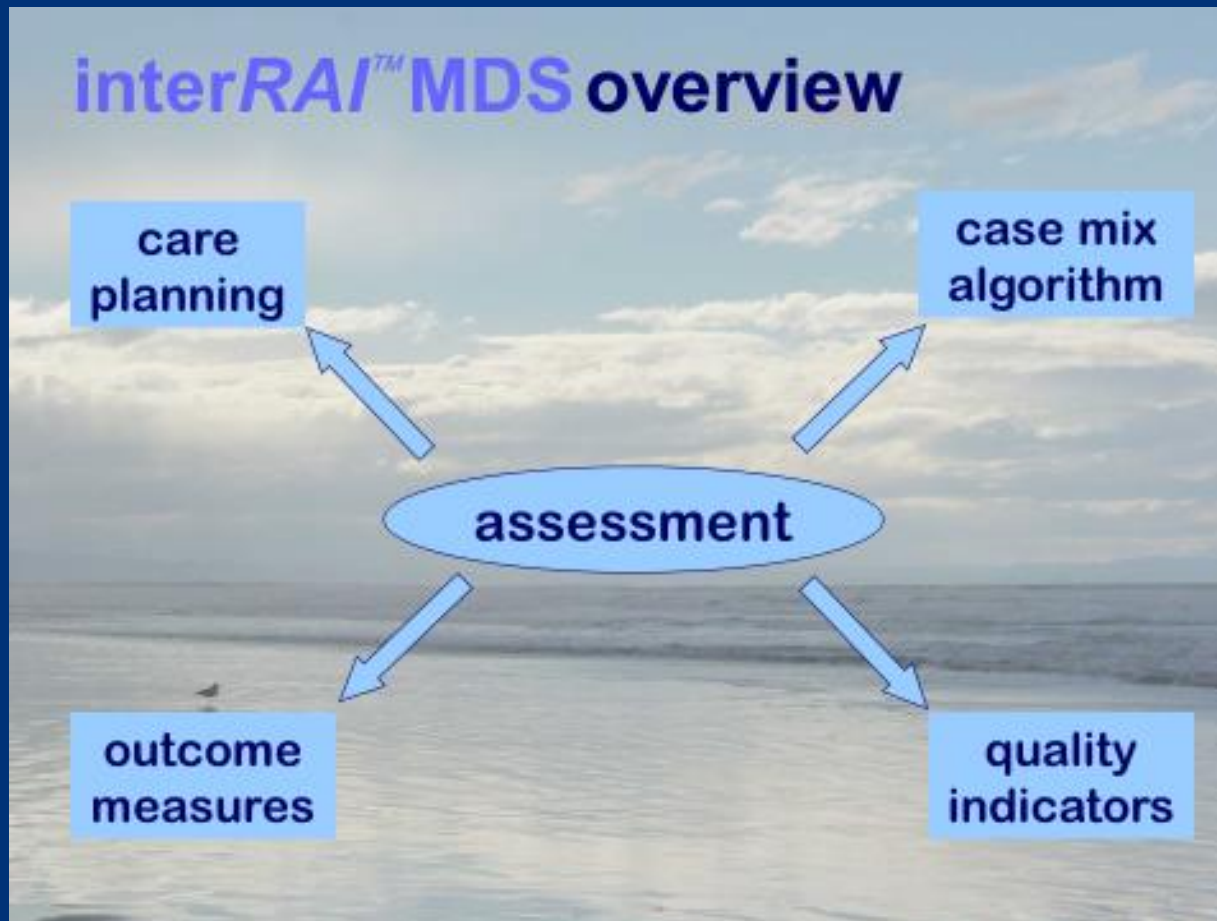
**what questions  
could we answer?**

*Dr Nigel Millar*

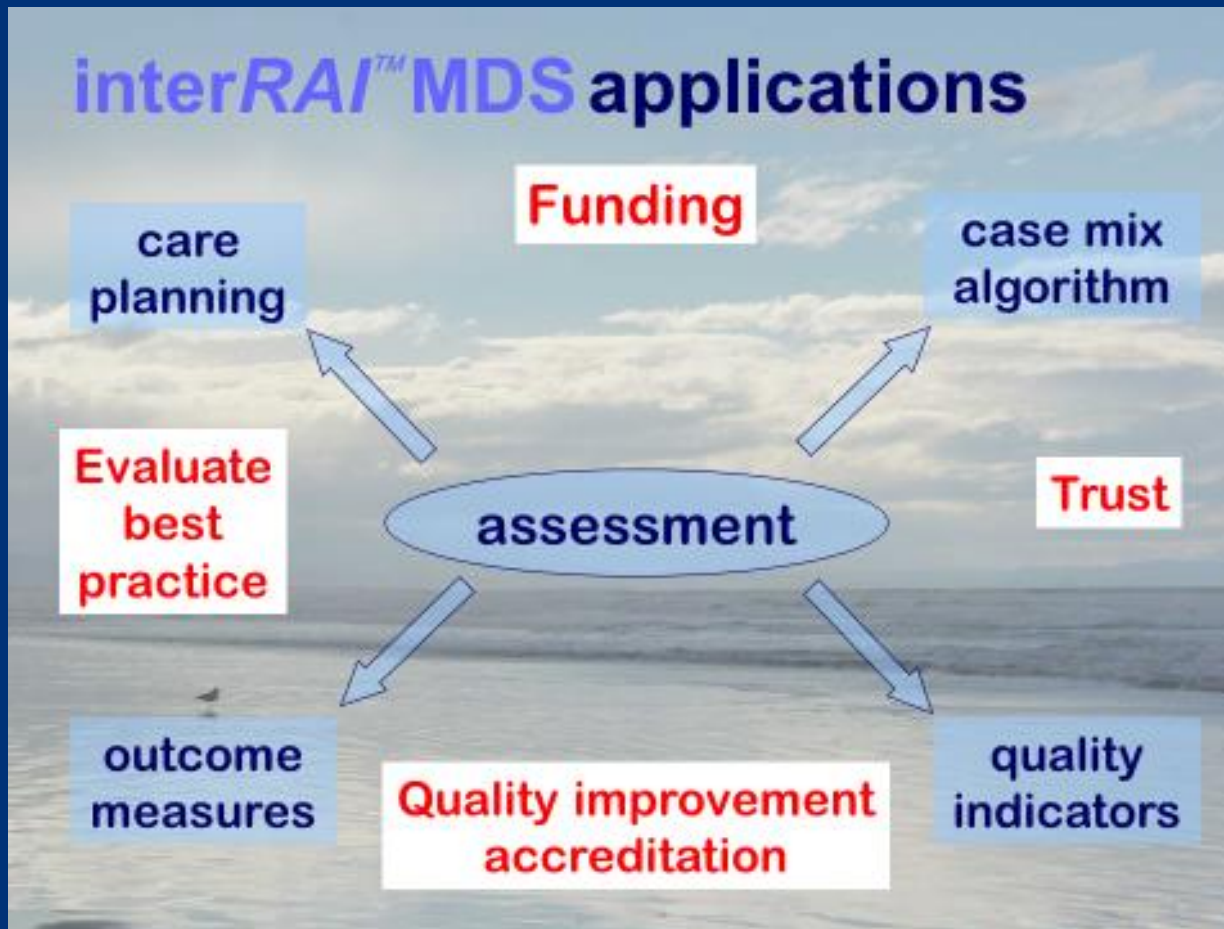
# The purpose of assessment

- The primary purpose of assessment is to:
- Plan and provide the best support and care for individuals

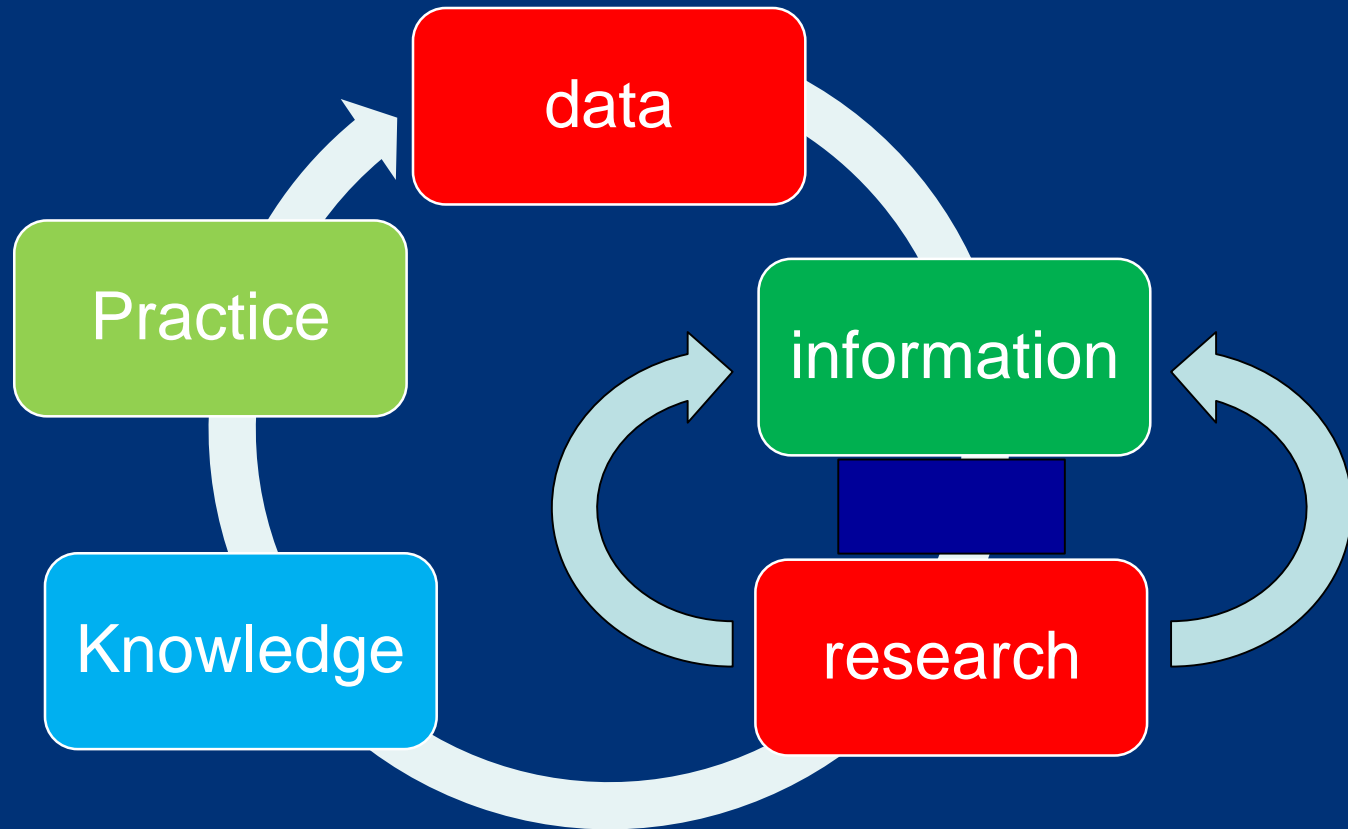
# Secondary Purposes

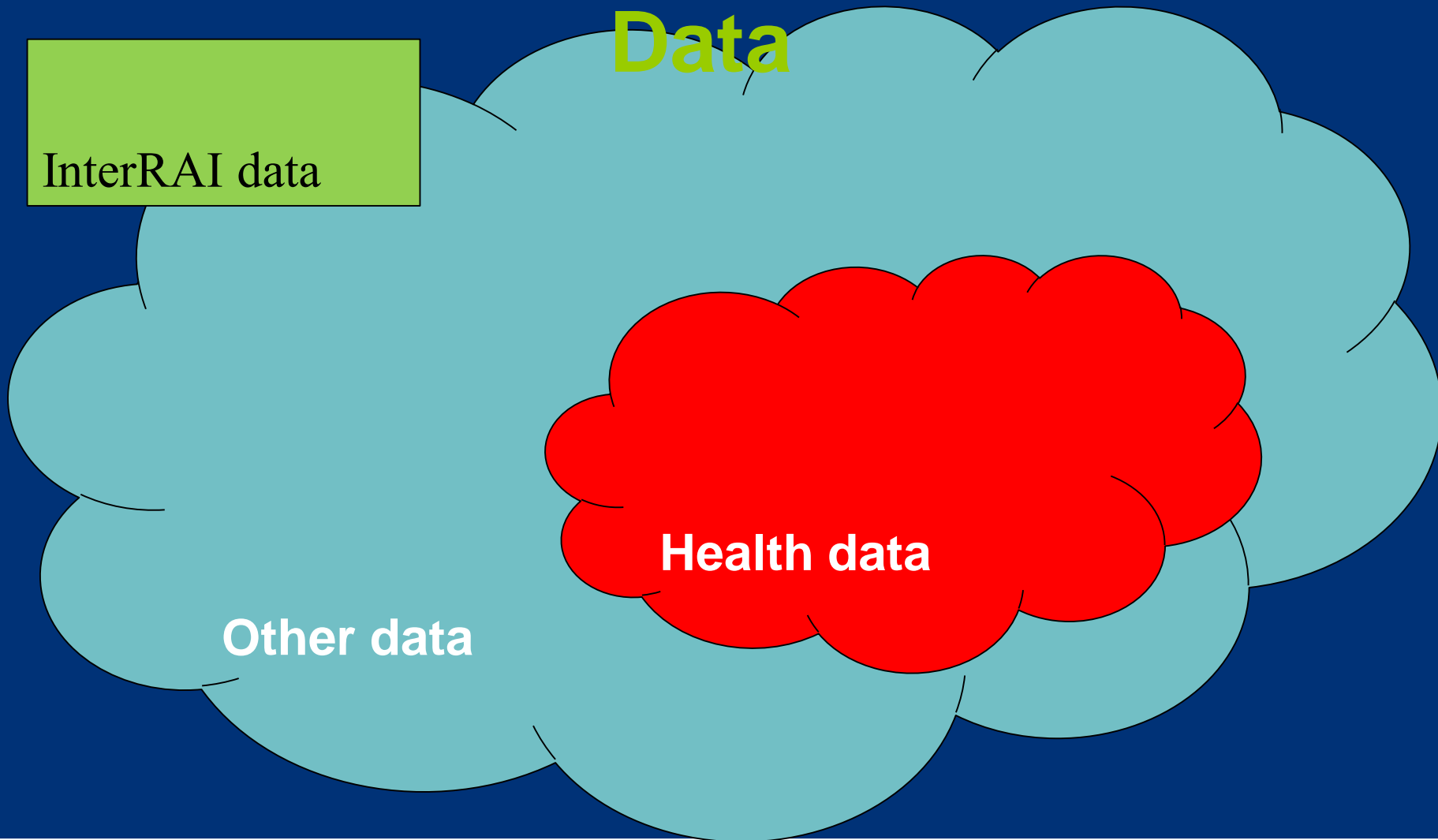


# Secondary Purposes



# Positive cycle





# Surgery

- Should I have this surgery doctor?
- Risks
- Outcomes
  - Real life
  - Cognitive function
  - Death
  - Functional ability

# Frailty

- Pro
  - Simple
  - Reproducible
  - Fast
  - Predictive
- Con
  - Unidimensional
  - Cognitive?
  - QoL?
  - Better Prediction?



## Longevity

- How long will this person live
- On average – actuarial life table
  
- People are not average
- They are an individual

## Longevity

- Use InterRAI assessment to:
- Generate an adjusted prediction – a prediagnosis probability
  - 25% chance of being alive in 5 years
  - 95% confidence interval 12 to 32%

# Polypharmacy

- Multiple combinations of multiple drugs
- Multiple diagnoses
- Multiple data combinations in InterRAI
  
- Complexity approximates to the number of particles in the universe
  
- Bring on the AI

# Improving use of assessment

- How often should we reassess in the community
- A comparison of planned 6 vs 12 month
- Or
- A predictive model – assess interval according assessment data

# Looking outside health data

- Lifestyle data
- Housing
- Mapping
- Commercial data
- Travel
- Financial