

interRAI Informer

Better Assessment, Better Care, Better Outcomes

View this email in your
browser

Welcome to the interRAI Informer #18 -
your regular news update from interRAI
New Zealand

In this issue

[Season's greetings](#)[1 in 4](#)[Data Visualisation](#)[New interRAI fellow](#)[Software upgrade 2018](#)[Office closing](#)[New on interRAI.co.nz](#)[Out and about](#)[Upcoming dates](#)

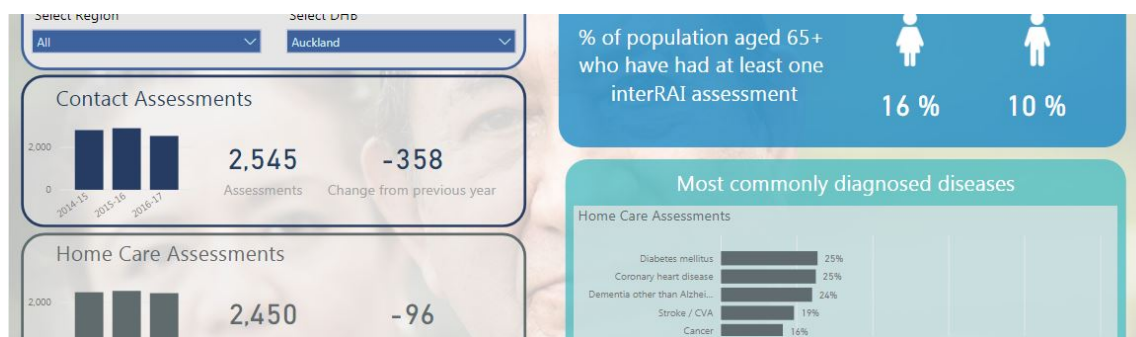
Season's greetings

This is our last issue of the interRAI Informer for this year. Thank you for your support in 2017. The interRAI Services team wishes you a safe and happy festive season.

1 in 4

One in four interRAI assessed home care clients in 2016/17 had a formal diagnosis of dementia.

(Source: [interRAI New Zealand Annual Report 2016/17](#))



Data Visualisation launched

The new interRAI Data Visualisation is live. It offers users access to a wealth of data, aggregated from over 100,000 comprehensive clinical assessments completed in the community and aged residential care facilities across New Zealand in 2016/17.

The interactive nature of the tool means users are in control of the information and can select the level of detail they desire.

interRAI Data Visualisation is complemented by the interRAI Services Annual Report with a special focus on people with dementia living at home.

- [Access Data Visualisation and Annual Report on the interRAI NZ website](#)

The launch event featured a presentation by guest speaker Dr Michal Boyd on Effective Care Planning. Links to videos of the presentation will be in the next issue of the interRAI Informer.

Susan Wood new interRAI fellow



Susan Wood is the first New Zealand nurse to be appointed as interRAI Fellow. She is Director, Quality and Patient Safety at Canterbury and West Coast DHBs and led a research project to review and revise the interRAI Acute Care instrument at Canterbury hospitals.

About interRAI, Susan appreciates how records stay with a patient and give good longitudinal information, and that assessments cover functional health, for example, whether a patient can walk or sit, which has been a gap with previous instruments. She says the key is being able to make assessments quick and easy to complete while still having enough information to create a care plan.

patients. Before joining Canterbury DHB she was Director of Nursing at MidCentral DHB for 14 years, and Director of Nursing at West Coast Hospital and Health Services. Susan holds a Master of Nursing Studies from La Trobe University.

interRAI International is a collaborative of about 85 members from over 35 countries. Susan is the third Fellow from New Zealand, the others being Dr Brigitte Meehan, National interRAI Services Manager, and Dr Nigel Millar, Chief Medical Officer, Southern DHB.

Coming up: Software upgrade

Two software upgrades are scheduled for early 2018:

- AIS, the interRAI online evaluations system, will go through its annual upgrade on **1-2 February 2018** and will be unavailable on these dates.
- The next upgrade for the interRAI Software is planned for **20 April 2018** (host site at Taranaki DHB) and **27 April 2018** (Canterbury DHB).

interRAI users should [check the interRAI NZ website for more information](#).



interRAI office closing over the holidays

interRAI Services are closed between **23 December 2017** and **2 January 2018**. During this period interRAI users can access the following support:

For help completing an interRAI assessment

- Check the interRAI New Zealand website at www.interrai.co.nz/help
- In AIS Online, read Mastering the RAI at central.aissystems.com

For password resets and technical support

- Call the host sites at 0800 10 80 44
- Please be advised that over the Christmas and New Year public holidays, technical support for interRAI will be reduced

To register for training

- You can register your interest in training via the interRAI website at www.interrai.co.nz/training
-

- [interRAI Data Visualisation](#)
- [interRAI Annual Report 2016/17](#)
- [Software upgrade April 2018](#)
- [interRAI Governance Board meeting minutes - 8 August 2017](#)
- [Software User Group minutes - meetings on 17 August and 20 July 2017](#)
- [Media release: Carers of loved ones with dementia](#)
- [Media release: Kiwis urgend to prepare for old age](#)
- [Factsheet: Finding interRAI competency certificates in AIS](#)
- [Factsheet: How to code MDS item L1 using NZ pressure injury definitions](#)
- [Factsheet: How to code section A8 Reason for Assessment](#)
- [National Standards for Contact Assessments](#)
- [National Standards for Home Care assessments](#)

Out and about



Brigitte Meehan, National interRAI Services Manager (4th from left) was among the key note speakers at the International Symposium on Big Data on Health and Mental Health in Hong Kong.



Brigette Meehan speaking about interRAI in New Zealand at the International Symposium on Big Data on Health and Mental Health in Hong Kong



interRAI Educator Robyn McLachlan speaking at the 2017 Occupational Therapy Conference in Nelson



General Manager interRAI Services Michele McCreddie speaking at HiNZ 2017 Conference in Rotorua

Upcoming dates

The interRAI Services team is taking a break from 22 December 2017, returning to the office on 3 January 2018.

To see upcoming training dates and to request interRAI training, visit our website at www.interrai.co.nz/register-for-training



Copyright © 2017 TAS, All rights reserved.

Keen to read more from us?

We recommend our other newsletter, Inside interRAI,
with operational updates for interRAI users in New Zealand.
[Subscribe to, or unsubscribe from, any of our newsletters.](#)

Want to change how you receive these emails?

You can [update your preferences](#) or [unsubscribe from this list](#)