



interRAI informer

Welcome to the interRAI Informer #21 -
your regular news update from interRAI
New Zealand

In this issue

85

[Roadmap](#)

[Pure Food Co research](#)

[Natural disasters](#)

[Loneliness research](#)

[Access to data](#)

[Vacancy](#)

[New on \[interRAI.co.nz\]\(http://interRAI.co.nz\)](#)

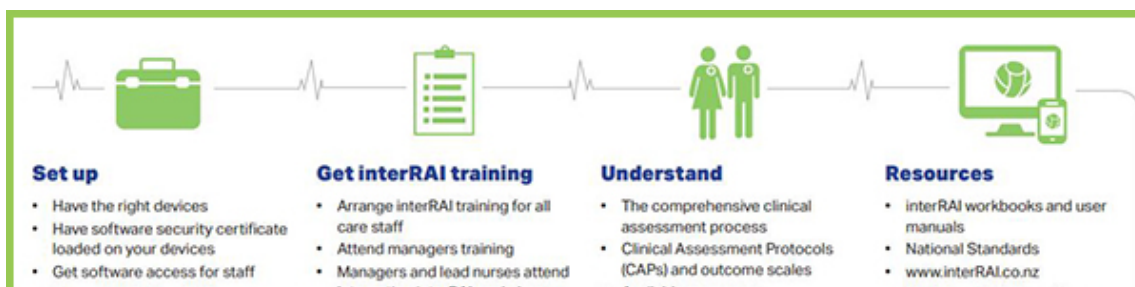
[Out and about](#)

[Upcoming dates](#)

85

85

85 is the median age of people assessed using the interRAI Long Term Care Facilities assessment (source: www.interRAI.co.nz/data)



Roadmap to integrating interRAI published

We are very pleased to publish a new resource for managers and lead nurses in aged residential care facilities who are looking to get the most out of interRAI. Look out for roadmap posters at our upcoming Integrating interRAI workshops, training courses and other events. [Download the roadmap from the interRAI website.](#)

Using interRAI to measure the effectiveness of products

The Pure Food Co is using interRAI data to demonstrate the impact their products have on residents in aged residential care.

Maia Royal, Director at The Pure Food Co describes his company's work: "Our mission at The Pure Food Co is to create delicious food that will help older people thrive when they are at their most vulnerable - a variety of specialist texture-modified foods that are full of fresh flavours and fortified with natural nutrition.

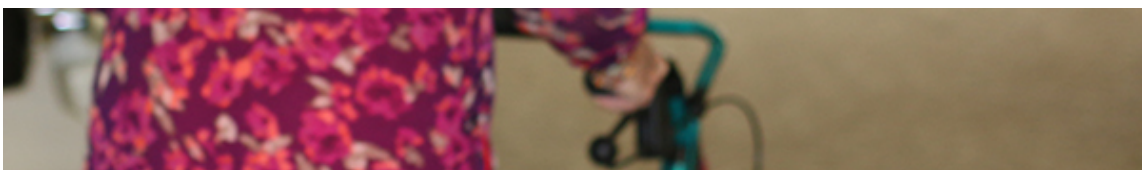


We are committed to measuring health and quality of life outcomes for those using Pure Foods. We believe the analysis of national InterRAI data is an effective way to demonstrate the impact that specialist foods can have on older people's wellbeing.

This research will analyse nutritional status/hydration, skin integrity, falls incidence, immunity and absence of disease, hospital admissions and length of stay, cognitive status, and functional status of those provided with Pure Food, compared to those who are catered to by in-house foodservice.

All aged care providers are invited to participate in this research. interRAI data provides excellent insights into the health outcomes of older people in aged care, as well as identifying the variables contributing to these health outcomes."

(image: The Pure Food Company)



Algorithm identifies vulnerable people during natural disasters

Canadian researchers have developed an algorithm that uses interRAI data to identify older adults in need of support after a disaster.

The algorithm uses data from interRAI's home care assessment to generate an up-to-date list of

vulnerable adults using home care services. It takes into account disability, health status, social isolation and the amount of support an individual may receive from informal caregivers.

- [Read the media release from the University of Waterloo](#)

interRAI summer research on loneliness

While loneliness is a big predictor of entering aged care facilities, living alone and loneliness don't always go together, says Richard Scrase, researcher and gerontology nurse specialist.

This was amongst the preliminary findings from a research project, jointly sponsored by the University of Canterbury (UC) and the South Island Alliance, *Using interRAI data to identify social isolation and loneliness in older people*. The project is part of the annual Summer Research Scholarship programme, led by Dr Hamish Jamieson, geriatrician and UC senior lecturer in medicine.

- [Read the news article on the South Island Alliance website](#)

How to access interRAI data

Aggregated data from interRAI assessments is publicly available through the data visualisation on our website. interRAI data lends itself to interesting research and you can request specific data from our data and reporting team. Read up about our process on the interRAI website.

- [interRAI Data Visualisation](#)
- [Requesting interRAI data](#)

Adding items to interRAI assessments

Occasionally we get asked about adding items to interRAI assessments in New Zealand. The interRAI Governance Board has now agreed a framework for this, taking into account guidelines from interRAI International and the Ministry of Health's license agreement for the interRAI suite of assessments.

- [Download the framework from the interRAI website](#)

- Check the interRAI NZ website [for updates on the software upgrade scheduled for May 2018](#)
- [Inside interRAI #6 – our newsletter for assessors and providers about wound management module, entering NHI identifiers, how to use agency nurses for interRAI assessments and more](#)
- [Roadmap to integrating interRAI in your facility](#)
- [Self-teaching guide to the interRAI software wound management module](#)
- [interRAI NZ Governance Board minutes from the December 2017 meeting](#)
- [interRAI Software User Group meeting minutes from December 2017 and February 2018](#)
- [Bios for new members of the interRAI NZ Governance Board](#)
- [Governance framework for adding new items to interRAI](#)

interRAI out and about



Thank you to everyone who came to our stand and interRAI General Manager Michele McCreddie's presentation at the recent Age Concerns Everyone conference.

On the stand: interRAI Educator Melissa Hall and Michele McCreddie



The New Zealand Aged Care Association have published their analysis of interRAI data in their report *Caring for our older Kiwis - The right place at the right time*.

- [Download the report from the NZACA website](#)

Upcoming dates

- **27 April 2018 in Timaru:** Integrating interRAI – workshop for managers and lead nurses in aged residential care. Contact John MacDougall, NZACA, at john@nzaca.org.nz to register.
- **8 May 2018 in Napier:** Integrating interRAI – workshop for managers and lead nurses in aged residential care. Contact John MacDougall, NZACA, at john@nzaca.org.nz to register.
- **18 May 2018 in Whangarei:** Integrating interRAI – workshop for managers and lead nurses in aged residential care. Contact John MacDougall, NZACA, at john@nzaca.org.nz to register.
- **19-21 November 2018 in Wellington:** See us at our stand at the Health Informatics New Zealand Conference.

To see upcoming training dates and to request interRAI training, visit our website at www.interrai.co.nz/register-for-training



Copyright © 2018 TAS. All rights reserved.

Keen to read more from us?

We recommend our other newsletter, Inside interRAI, with operational updates for interRAI users in New Zealand. [Subscribe to, or unsubscribe from, any of our newsletters.](#)

Want to change how you receive these emails?
You can [update your preferences](#) or [unsubscribe from this list](#)