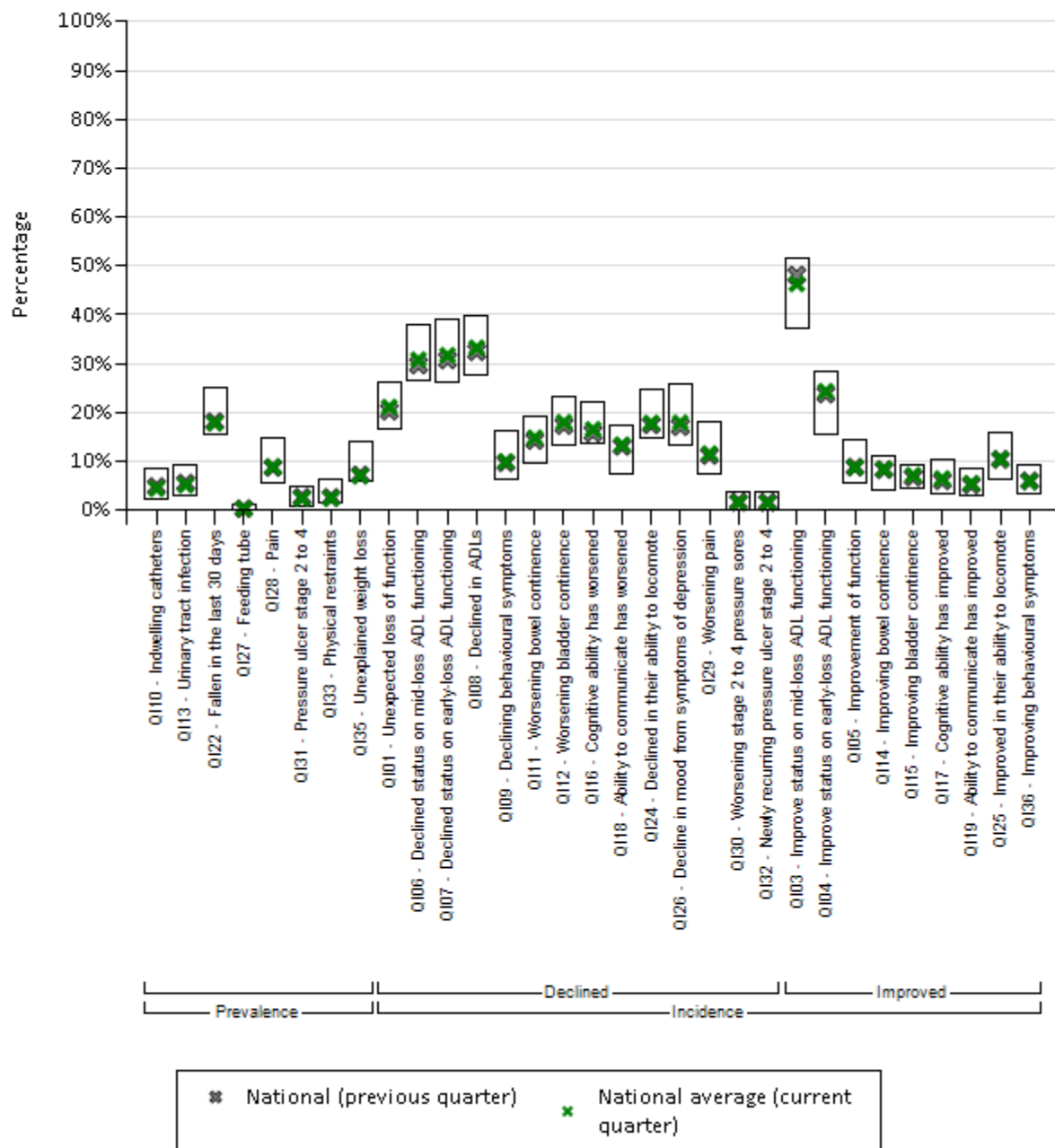


InterRAI Quality Indicators, National, July to September 2018 Care Level Group: All



Note: Bars show the range of values for all DHBs.

The box shows the minimum and maximum DHB scores for each Quality Indicator.

For prevalence, lower scores are preferable over time.

For incidence - declined, lower scores are preferable over time.

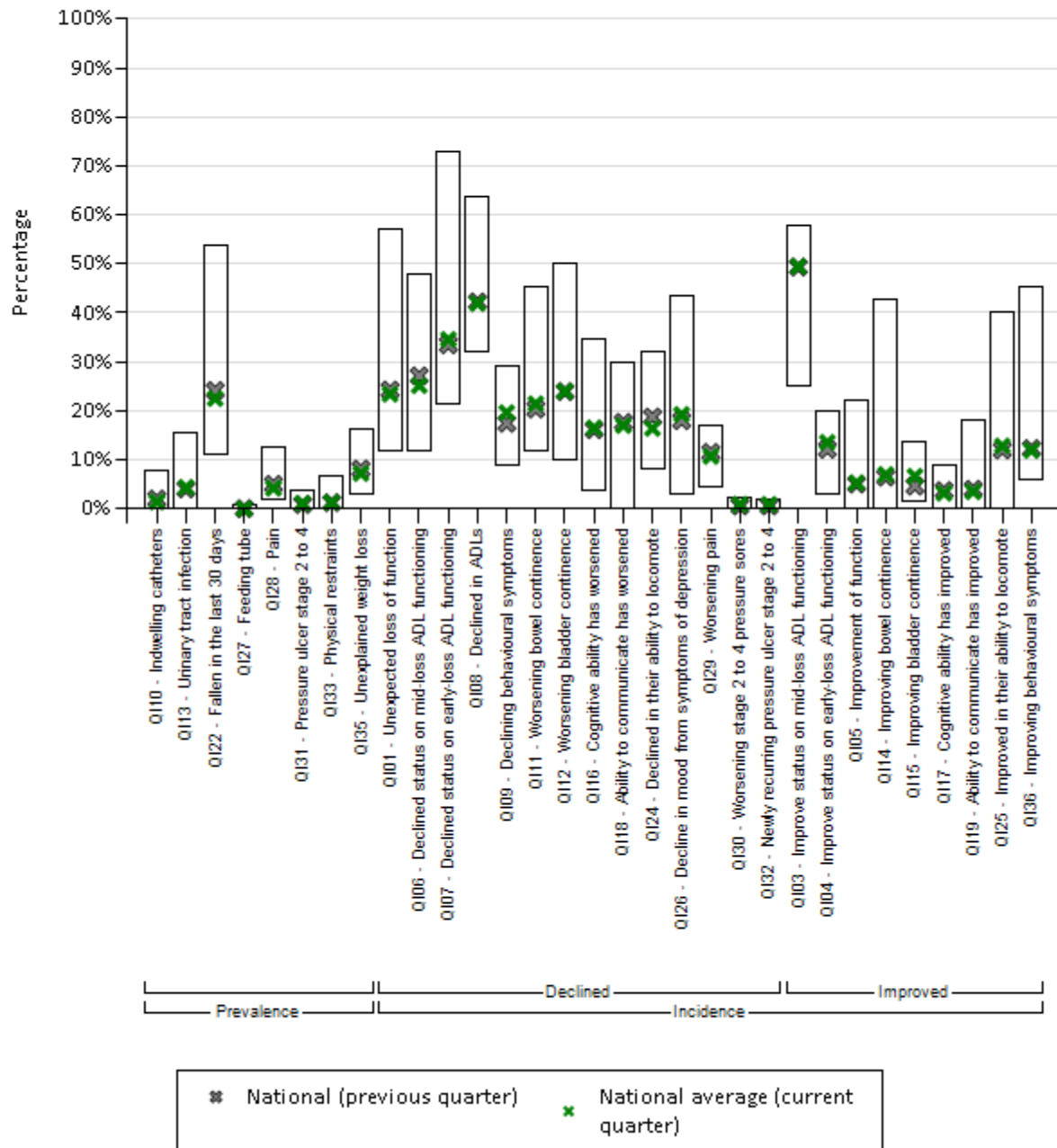
For incidence - improved, higher scores are preferable over time.

More information on how to interpret the quality indicators can be found on our website:

<https://www.interrai.co.nz/data-and-reporting/quality-indicators/>

InterRAI Quality Indicators, National, July to September 2018

Care Level Group: Dementia



Note: Bars show the range of values for all DHBs.

The box shows the minimum and maximum DHB scores for each Quality Indicator.

For prevalence, lower scores are preferable over time.

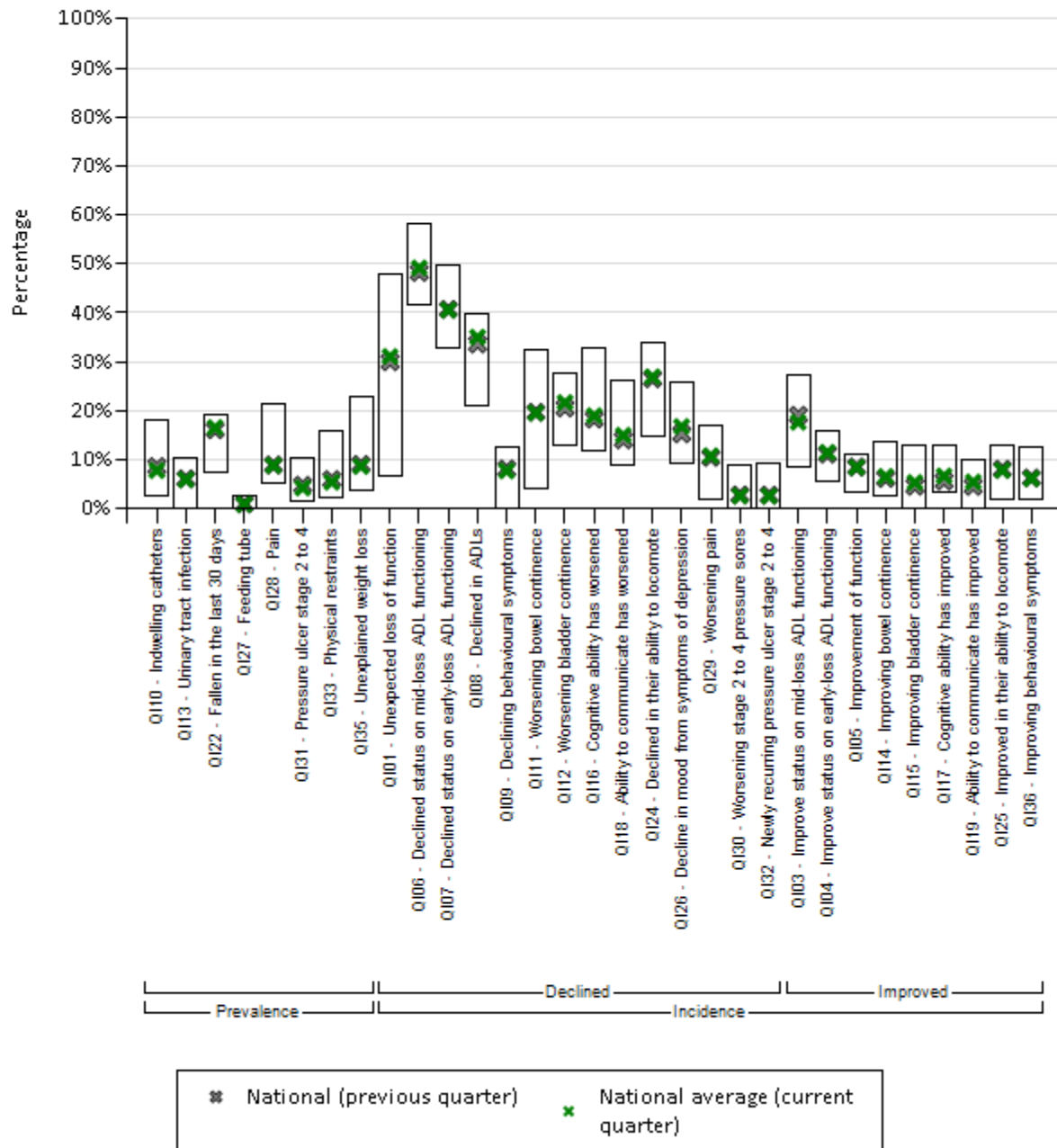
For incidence - declined, lower scores are preferable over time.

For incidence - improved, higher scores are preferable over time.

More information on how to interpret the quality indicators can be found on our website:

<https://www.interrai.co.nz/data-and-reporting/quality-indicators/>

InterRAI Quality Indicators, National, July to September 2018
Care Level Group: Hospital care



Note: Bars show the range of values for all DHBs.

The box shows the minimum and maximum DHB scores for each Quality Indicator.

For prevalence, lower scores are preferable over time.

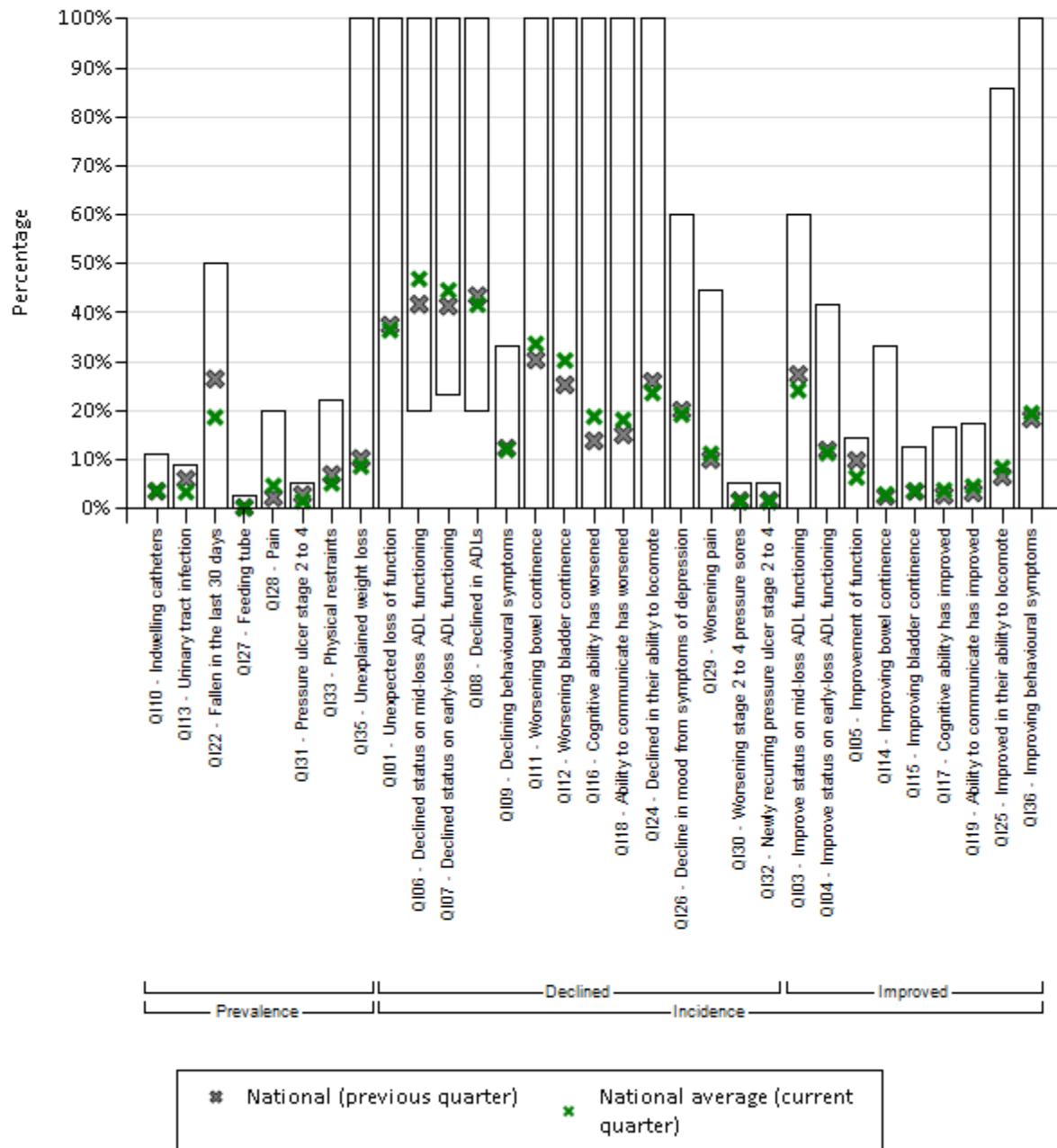
For incidence - declined, lower scores are preferable over time.

For incidence - improved, higher scores are preferable over time.

More information on how to interpret the quality indicators can be found on our website:

<https://www.interrai.co.nz/data-and-reporting/quality-indicators/>

InterRAI Quality Indicators, National, July to September 2018
Care Level Group: Psycho-geriatric care



Note: Bars show the range of values for all DHBs.

The box shows the minimum and maximum DHB scores for each Quality Indicator.

For prevalence, lower scores are preferable over time.

For incidence - declined, lower scores are preferable over time.

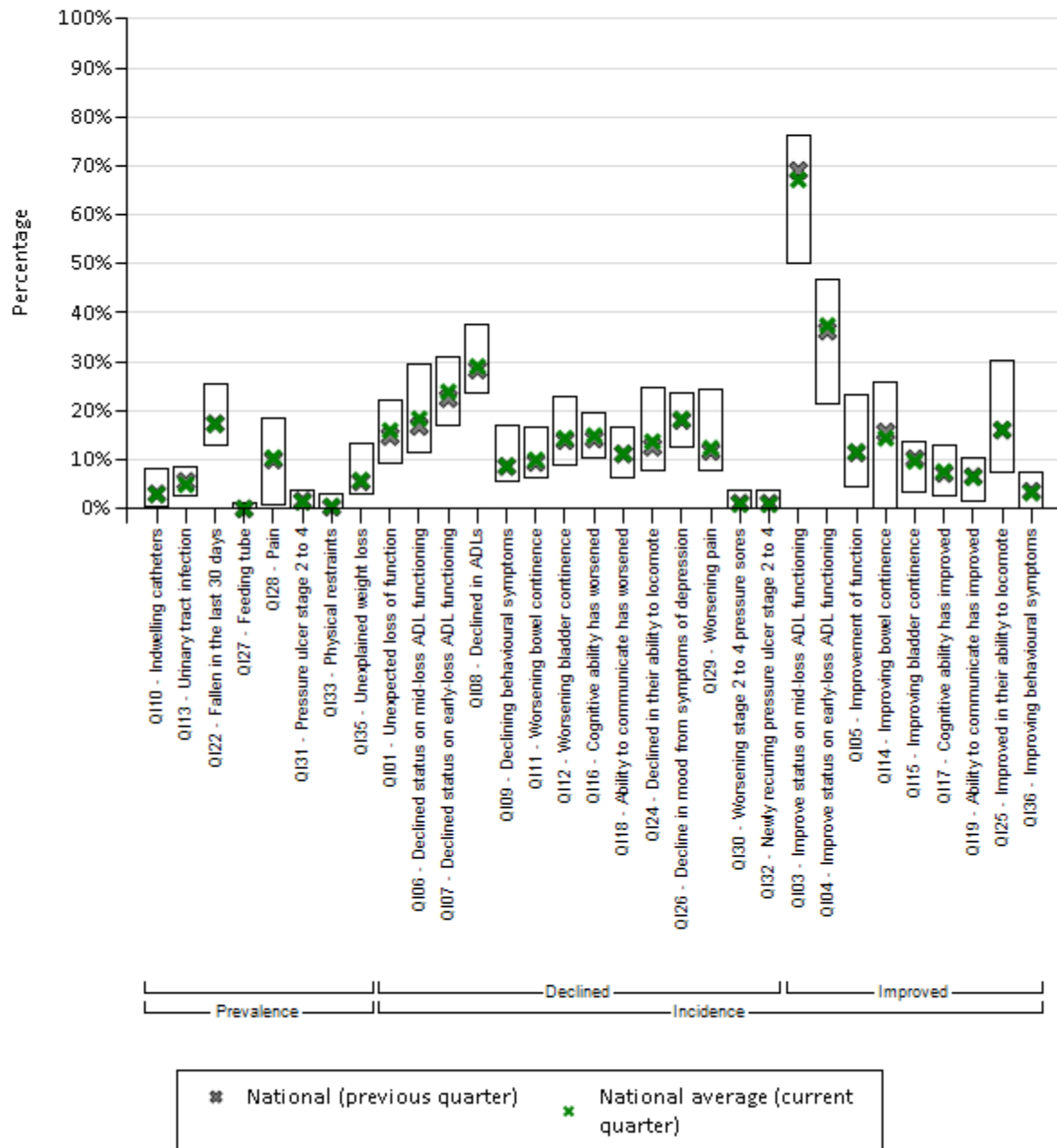
For incidence - improved, higher scores are preferable over time.

More information on how to interpret the quality indicators can be found on our website:

<https://www.interrai.co.nz/data-and-reporting/quality-indicators/>

InterRAI Quality Indicators, National, July to September 2018

Care Level Group: Resthome care



Note: Bars show the range of values for all DHBs.

The box shows the minimum and maximum DHB scores for each Quality Indicator.

For prevalence, lower scores are preferable over time.

For incidence - declined, lower scores are preferable over time.

For incidence - improved, higher scores are preferable over time.

More information on how to interpret the quality indicators can be found on our website:

<https://www.interrai.co.nz/data-and-reporting/quality-indicators/>